

Elektra Hemp Flower

Whole Circle Farms

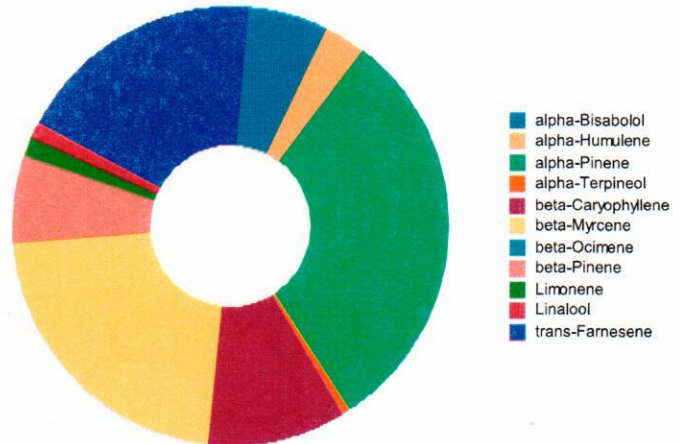
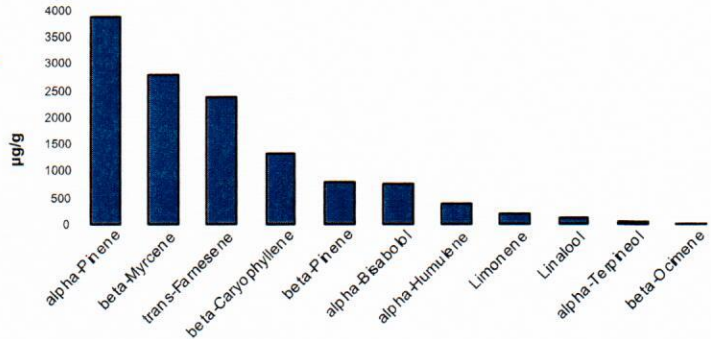
AG-R10408871HG

Laboratory ID: 1909077-01

Terpene Test Report

Analysis Method/SOP: Terp.

Analyte	Result µg/g	Result %
alpha-Bisabolol	751.5	0.07515
Camphene	< LOQ	< LOQ
Camphor	< LOQ	< LOQ
delta-3-Carene	< LOQ	< LOQ
beta-Caryophyllene	1324	0.1324
Caryophyllene Oxide	< LOQ	< LOQ
p-Cymene	< LOQ	< LOQ
Eucalyptol	< LOQ	< LOQ
Geraniol	< LOQ	< LOQ
Geranyl acetate	< LOQ	< LOQ
Guaiol	< LOQ	< LOQ
alpha-Humulene	382	0.03820
Isoborneol	< LOQ	< LOQ
Isopulegol	< LOQ	< LOQ
Limonene	202.3	0.02023
Linalool	110.5	0.01105
beta-Myrcene	2805	0.2805
trans-Nerolidol	< LOQ	< LOQ
Ocimene	< LOQ	< LOQ
alpha-Pinene	3899	0.3899
beta-Pinene	798.2	0.07982
Pulegone	< LOQ	< LOQ
Sabinene	< LOQ	< LOQ
gamma-Terpinene	< LOQ	< LOQ
alpha-Terpinene	< LOQ	< LOQ
Terpinolene	< LOQ	< LOQ
Valencene	< LOQ	< LOQ
Nerol	< LOQ	< LOQ
L-(-)-Fenchone	< LOQ	< LOQ
cis-Nerolidol	< LOQ	< LOQ
(+/-)-Borneol	< LOQ	< LOQ
(+/-)-Fenchone	< LOQ	< LOQ
alpha-Phellandrene	< LOQ	< LOQ



Erik Werstler

Erik Werstler
Lab Director

Elektra Hemp Flower

Whole Circle Farms

AG-R10408871HG

Laboratory ID: 1909077-01

Analysis Method/SOP: Terp

Analyte	Result µg/g	Result %
beta-Ocimene	15.41	0.001541
cis-Farnesene	< LOQ	< LOQ
Menthol	< LOQ	< LOQ
trans-beta-Ocimene	< LOQ	< LOQ
trans-Farnesene	2384	0.2384
alpha-Terpineol	46.72	0.004672
gamma-Terpineol	< LOQ	< LOQ
Total Terpenes	12720	1.272



Erik Werstler

Lab Director