

EVIO Labs Portland
 14775 SW 74th Ave, Tigard, OR 97224
 503-954-2562 / OLCC 010-10046111391 / www.EVIOLabs.com

Midwest
Whole Circle Farms
 AG-R1040887IHG



Confident Cannabis ID: 2001ELP0041.0148

Sample ID: P200043-01

Matrix: Hemp

METRC Batch #:

Sampling Method/SOP: Client

Date Sampled: NA

Date Accepted: 01/13/20

Harvest/Process Lot ID:

Batch ID: TNR-299-002

Batch Size (g):

Unit for Sale:

Harvest/Production Date:

Cannabinoid Analysis

FOR INFORMATIONAL USE ONLY - NOT FOR REGULATORY PURPOSES

Date/Time Extracted: 01/14/20 10:08

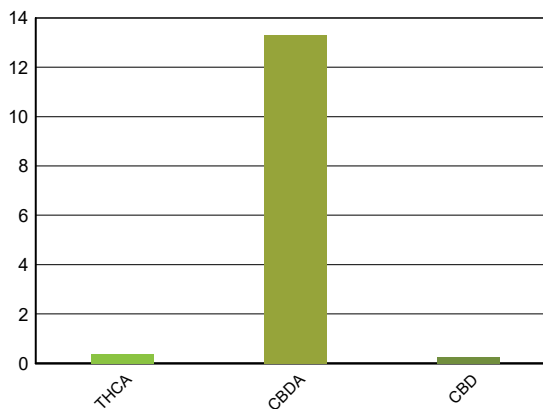
Analysis Method/SOP: SOP.T.40.023

Date/Time Analyzed: 01/15/20 11:30

Cannabinoids	LOQ(%)	mg/g	% weight	Cannabinoid Profile
--------------	--------	------	----------	---------------------

Total THC <small>((THCA*0.877)+Δ9THC)</small>		3.37	0.337	
Total CBD <small>((CBDA*0.877)+CBD)</small>		119.08	11.908	

THCA	0.0500	3.84	0.384
delta 9-THC	0.0500	< LOQ	< LOQ
delta 8-THC	0.0500	< LOQ	< LOQ
THCV	0.0500	< LOQ	< LOQ
CBGA	0.0500	< LOQ	< LOQ
CBDA	0.0500	133.00	13.3
CBD	0.0500	2.44	0.244
CBDV	0.0500	< LOQ	< LOQ
CBN	0.0500	< LOQ	< LOQ
CBG	0.0500	< LOQ	< LOQ
CBC	0.0500	< LOQ	< LOQ
THCV-A	0.0500	< LOQ	< LOQ
CBDV-A	0.0500	< LOQ	< LOQ
Sum of tested Cannabinoids	0.0500	139.00	13.9



Moisture Content

Date/Time Analyzed: 01/15/20 16:51
 Analysis Method/SOP: SOP.T.40.010

Moisture: **20.8 %**

"Total THC" and "Total CBD" are calculated values and are an Oregon reporting requirement (OAR 333-064-0100). For Cannabinoid analysis, only delta 9-THC, THCA, CBD, CBDA are ORELAP accredited analytes. Cannabinoid values reported for plant matter are dry weight corrected; Oregon Water Activity action level is 0.65Aw and Oregon Moisture Content action level is 15%, Samples above limit will be highlighted RED; FD = Field Duplicate; LOQ = Limit of Quantitation.

Kawai Medeiros
 Laboratory Manager - 1/20/2020

EVIO Labs Portland
 14775 SW 74th Ave, Tigard, OR 97224
 503-954-2562 / OLCC 010-10046111391 / www.EVIOLabs.com

FOR INFORMATIONAL USE ONLY - NOT FOR REGULATORY PURPOSES

Midwest

Whole Circle Farms

AG-R1040887IHG

Sample ID: P200043-01

METRC Batch #:

Matrix: Hemp

Date Sampled: NA

Date Accepted: 01/13/20

Batch ID: TNR-299-002

Batch Size:

Sampling Method/SOP: Client

Terpene Analysis

Date/Time Extracted: 01/15/20 15:00

Analysis Method/SOP: SOP.T.40.092

Date/Time Analyzed: 01/15/20 19:56

Analyte	LOQ (%)	Mass (mg/g)	Mass (%)	Analyte	LOQ (%)	Mass (mg/g)	Mass (%)
alpha-Pinene	0.200	1.45	0.145	beta-Pinene	0.200	0.646	0.0646
Camphene	0.200	< LOQ	< LOQ	Sabinene	0.200	< LOQ	< LOQ
Sabinene hydrate	0.200	< LOQ	< LOQ	beta-Myrcene	0.200	8.11	0.811
p-Mentha-1,5-diene	0.200	< LOQ	< LOQ	(+)-3-Carene	0.200	< LOQ	< LOQ
alpha-Terpinene	0.200	< LOQ	< LOQ	gamma-Terpinene	0.200	< LOQ	< LOQ
Limonene	0.200	0.935	0.0935	Eucalyptol	0.200	< LOQ	< LOQ
Guaiol	0.200	< LOQ	< LOQ	Terpinolene	0.200	< LOQ	< LOQ
Linalool	0.200	< LOQ	< LOQ	Camphor	0.200	< LOQ	< LOQ
(+)-Camphor	0.200	< LOQ	< LOQ	(-)-Camphor	0.200	< LOQ	< LOQ
Isopulegol	0.200	< LOQ	< LOQ	Isoborneol	0.200	< LOQ	< LOQ
Borneol	0.200	< LOQ	< LOQ	Hexahydrothymol	0.200	< LOQ	< LOQ
Geraniol	0.200	< LOQ	< LOQ	(+)-Pulegone	0.200	< LOQ	< LOQ
Nerol	0.200	< LOQ	< LOQ	cis-Nerolidol	0.200	< LOQ	< LOQ
trans-Nerolidol	0.200	< LOQ	< LOQ	Geranyl acetate	0.200	< LOQ	< LOQ
alpha-Cedrene	0.200	< LOQ	< LOQ	trans-Caryophyllene	0.200	3.48	0.348
Caryophyllene Oxide	0.200	0.247	0.0247	alpha-Humulene	0.200	1.09	0.109
Valencene	0.200	< LOQ	< LOQ	alpha-Farnesene	0.200	2.02	0.202
beta-Farnesene	0.200	1.14	0.114	Cedrol	0.200	< LOQ	< LOQ
alpha-Bisabolol	0.200	1.25	0.125	Fenchone	0.200	< LOQ	< LOQ
Fenchyl Alcohol	0.200	< LOQ	< LOQ	trans, beta- Ocimene	0.200	< LOQ	< LOQ
beta, cis- Ocimene	0.200	< LOQ	< LOQ	Terpineol	0.200	< LOQ	< LOQ
Total (Sum):						20.37	2.04

Analysis performed on GCMS with confirmation ion identification. Terpene analysis is not ORELAP accredited.
 Results reported as dry weight. LOQ = Limit of Quantitation



Kawai Medeiros
 Laboratory Manager - 1/20/2020

EVIO Labs Portland
14775 SW 74th Ave, Tigard, OR 97224
503-954-2562 / OLCC 010-10046111391 / www.EVIOLabs.com

FOR INFORMATIONAL USE ONLY - NOT FOR REGULATORY PURPOSES

Midwest

Whole Circle Farms

AG-R1040887IHG

Sample ID: P200043-01

Matrix: Hemp

METRC Batch #:

Date Sampled: NA

Date Accepted: 01/13/20

Batch ID: TNR-299-002

Batch Size:

Sampling Method/SOP: Client

Pesticides

Date/Time Extracted: 01/17/20 12:35

Date/Time Analyzed: 1/20/2020 9:49:00AM

Analysis Method/SOP: SOP.T.40.051 PDX

Analyte	LOQ	Action Level	Result	Units	Type
Abamectin	0.200	0.5	< LOQ	ppm	
Acephate	0.200	0.4	< LOQ	ppm	Organophosphate insecticide
Acequinocyl	1.00	2	< LOQ	ppm	
Acetamiprid	0.100	0.2	< LOQ	ppm	Neonicotinoid insecticide
Aldicarb	0.200	0.4	< LOQ	ppm	Carbamate insecticide
Azoxystrobin	0.100	0.2	< LOQ	ppm	
Bifenazate	0.100	0.2	< LOQ	ppm	Unclassified insecticide
Bifenthrin	0.100	0.2	< LOQ	ppm	
Boscalid	0.200	0.4	< LOQ	ppm	Anilide fungicide
Carbaryl	0.100	0.2	< LOQ	ppm	Carbamate insecticide
Carbofuran	0.100	0.2	< LOQ	ppm	Carbamate insecticide
Chlorantraniliprole	0.100	0.2	< LOQ	ppm	Anthranilic diamide insecticide
Chlorfenapyr	0.400	1	< LOQ	ppm	Pyrazole insecticide
Chlorpyrifos	0.100	0.2	< LOQ	ppm	Organophosphate insecticide
Clofentezine	0.100	0.2	< LOQ	ppm	
Cyfluthrin	0.400	1	< LOQ	ppm	
Cypermethrin	0.400	1	< LOQ	ppm	
Daminozide	0.400	1	< LOQ	ppm	
DDVP (Dichlorvos)	0.400	1	< LOQ	ppm	
Diazinon	0.100	0.2	< LOQ	ppm	Organophosphate insecticide
Dimethoate	0.100	0.2	< LOQ	ppm	
Ethoprophos	0.100	0.2	< LOQ	ppm	
Etofenprox	0.200	0.4	< LOQ	ppm	
Etoxazole	0.100	0.2	< LOQ	ppm	Unclassified miticide
Fenoxycarb	0.100	0.2	< LOQ	ppm	
Fenpyroximate	0.200	0.4	< LOQ	ppm	
Fipronil	0.200	0.4	< LOQ	ppm	Pyrazole insecticide
Fonicamid	0.400	1	< LOQ	ppm	Pyridinecarboxamide insecticide
Fludioxonil	0.200	0.4	< LOQ	ppm	non-systemic fungicide
Hexythiazox	0.400	1	< LOQ	ppm	
Imazalil	0.100	0.2	< LOQ	ppm	Azole fungicide
Imidacloprid	0.200	0.4	< LOQ	ppm	Neonicotinoid insecticide
Kresoxim-methyl	0.200	0.4	< LOQ	ppm	
Malathion	0.100	0.2	< LOQ	ppm	
Metalaxyl	0.100	0.2	< LOQ	ppm	
Methiocarb	0.100	0.2	< LOQ	ppm	Carbamate insecticide



Kawai Medeiros

Laboratory Manager - 1/20/2020

EVIO Labs Portland
14775 SW 74th Ave, Tigard, OR 97224
503-954-2562 / OLCC 010-10046111391 / www.EVIOLabs.com
FOR INFORMATIONAL USE ONLY - NOT FOR REGULATORY PURPOSES

Midwest

Whole Circle Farms

AG-R1040887IHG

Sample ID: P200043-01

METRC Batch #:

Matrix: Hemp

Date Sampled: NA

Date Accepted: 01/13/20

Batch ID: TNR-299-002

Batch Size:

Sampling Method/SOP: Client

Pesticides

Date/Time Extracted: 01/17/20 12:35

Date/Time Analyzed: 1/20/2020 9:49:00AM

Analysis Method/SOP: SOPT.40.051 PDX

Analyte	LOQ	Action Level	Result	Units	Type
Methomyl	0.200	0.4	< LOQ	ppm	Carbamate insecticide
Methyl parathion	0.100	0.2	< LOQ	ppm	
MGK-264	0.100	0.2	< LOQ	ppm	
Myclobutanil	0.100	0.2	< LOQ	ppm	Azole fungicide
Naled	0.200	0.5	< LOQ	ppm	
Oxamyl	0.400	1	< LOQ	ppm	Carbamate insecticide
Paclobutrazol	0.200	0.4	< LOQ	ppm	Azole plant growth regulator
Permethrins	0.100	0.2	< LOQ	ppm	
Phosmet	0.100	0.2	< LOQ	ppm	Organophosphate insecticide
Piperonyl butoxide	1.00	2	< LOQ	ppm	
Prallethrin	0.100	0.2	< LOQ	ppm	
Propiconazole	0.200	0.4	< LOQ	ppm	
Propoxur	0.100	0.2	< LOQ	ppm	Carbamate insecticide
Pyrethrins	0.400	1	< LOQ	ppm	
Pyridaben	0.100	0.2	< LOQ	ppm	Unclassified insecticide
Spinosad	0.100	0.2	< LOQ	ppm	Spinosyn insecticide
Spiromesifen	0.100	0.2	< LOQ	ppm	Keto-enol insecticide
Spirotetramat	0.100	0.2	< LOQ	ppm	Keto-enol insecticide
Spiroxamine	0.200	0.4	< LOQ	ppm	Unclassified fungicide
Tebuconazole	0.200	0.4	< LOQ	ppm	
Thiacloprid	0.100	0.2	< LOQ	ppm	
Thiamethoxam	0.100	0.2	< LOQ	ppm	Neonicotinoid insectide
Trifloxystrobin	0.100	0.2	< LOQ	ppm	Strobin fungicide

Results above the action level fail Oregon state testing requirements and will be highlighted RED.

LOQ= Limit of Quantitation; PPM= Parts per million; ND= Not detected; NT= Not tested; AC= Above calibration range. PASS/FAIL status based on OAR 333-007.



Kawai Medeiros
Laboratory Manager - 1/20/2020

EVIO Labs Portland
 14775 SW 74th Ave, Tigard, OR 97224
 503-954-2562 / OLCC 010-10046111391 / www.EVIOLabs.com

Quality Control

Batch: P20A066 - SOP.T.30.050PDX Prep for Cannabinoids

Blank(P20A066-BLK1)				Extracted: 01/14/20 10:08	Analyzed: 01/15/20 11:30		
Analyte	Result	LOQ	Recovery Limits	Analyte	Result	LOQ	Recovery Limits
THCA	< LOQ	0.0500 (%)	< LOQ	delta 9-THC	< LOQ	0.0500 (%)	< LOQ
CBDA	< LOQ	0.0500 (%)	< LOQ	CBD	< LOQ	0.0500 (%)	< LOQ
CBDV-A	< LOQ	0.0500 (%)	< LOQ	CBDV	< LOQ	0.0500 (%)	< LOQ
CBG	< LOQ	0.0500 (%)	< LOQ	CBGA	< LOQ	0.0500 (%)	< LOQ
CBN	< LOQ	0.0500 (%)	< LOQ	CBC	< LOQ	0.0500 (%)	< LOQ
Sum of tested Cannabinoid:	< LOQ	0.0500 (%)	< LOQ				

Batch: P20A067 - SOP.T.40.010 Moisture Content

Blank(P20A067-BLK1)				Extracted: 01/15/20 16:51	Analyzed: 01/15/20 16:51		
Analyte	Result	LOQ	Recovery Limits	Analyte	Result	LOQ	Recovery Limits
Percent Moisture	100	(%)	< LOQ				

Batch: P20A074 - SOP.T.40.092 PDX Terpenoid Analysis via HS-GC-MS

Blank(P20A074-BLK1)				Extracted: 01/15/20 15:00	Analyzed: 01/15/20 17:30		
Analyte	Result	LOQ	Recovery Limits	Analyte	Result	LOQ	Recovery Limits
alpha-Pinene	< LOQ	0.200 (mg/g)	< LOQ	beta-Pinene	< LOQ	0.200 (mg/g)	< LOQ
Camphene	< LOQ	0.200 (mg/g)	< LOQ	Sabinene	< LOQ	0.200 (mg/g)	< LOQ
Sabinene hydrate	< LOQ	0.200 (mg/g)	< LOQ	beta-Myrcene	< LOQ	0.200 (mg/g)	< LOQ
p-Mentha-1,5-diene	< LOQ	0.200 (mg/g)	< LOQ	(+)-3-Carene	< LOQ	0.200 (mg/g)	< LOQ
alpha-Terpinene	< LOQ	0.200 (mg/g)	< LOQ	gamma-Terpinene	< LOQ	0.200 (mg/g)	< LOQ
Limonene	< LOQ	0.200 (mg/g)	< LOQ	Eucalyptol	< LOQ	0.200 (mg/g)	< LOQ
Guaiol	< LOQ	0.200 (mg/g)	< LOQ	Terpinolene	< LOQ	0.200 (mg/g)	< LOQ
Linalool	< LOQ	0.200 (mg/g)	< LOQ	Camphor	< LOQ	0.200 (mg/g)	< LOQ
(+)-Camphor	< LOQ	0.200 (mg/g)	< LOQ	(-)-Camphor	< LOQ	0.200 (mg/g)	< LOQ
Isopulegol	< LOQ	0.200 (mg/g)	< LOQ	Isoborneol	< LOQ	0.200 (mg/g)	< LOQ
Borneol	< LOQ	0.200 (mg/g)	< LOQ	Hexahydrothymol	< LOQ	0.200 (mg/g)	< LOQ
Geraniol	< LOQ	0.200 (mg/g)	< LOQ	(+)-Pulegone	< LOQ	0.200 (mg/g)	< LOQ
Nerol	< LOQ	0.200 (mg/g)	< LOQ	cis-Nerolidol	< LOQ	0.200 (mg/g)	< LOQ
trans-Nerolidol	< LOQ	0.200 (mg/g)	< LOQ	Geranyl acetate	< LOQ	0.200 (mg/g)	< LOQ
alpha-Cedrene	< LOQ	0.200 (mg/g)	< LOQ	trans-Caryophyllene	< LOQ	0.200 (mg/g)	< LOQ
Caryophyllene Oxide	< LOQ	0.200 (mg/g)	< LOQ	alpha-Humulene	< LOQ	0.200 (mg/g)	< LOQ
Valencene	< LOQ	0.200 (mg/g)	< LOQ	alpha-Farnesene	< LOQ	0.200 (mg/g)	< LOQ
beta-Farnesene	< LOQ	0.200 (mg/g)	< LOQ	Cedrol	< LOQ	0.200 (mg/g)	< LOQ
alpha-Bisabolol	< LOQ	0.200 (mg/g)	< LOQ	Fenchone	< LOQ	0.200 (mg/g)	< LOQ
Fenchyl Alcohol	< LOQ	0.200 (mg/g)	< LOQ	trans, beta- Ocimene	< LOQ	0.200 (mg/g)	< LOQ
beta, cis- Ocimene	< LOQ	0.200 (mg/g)	< LOQ	Terpineol	< LOQ	0.200 (mg/g)	< LOQ



Kawai Medeiros
Laboratory Manager - 1/20/2020