

**Lifer Hemp Flower**

Whole Circle Farms

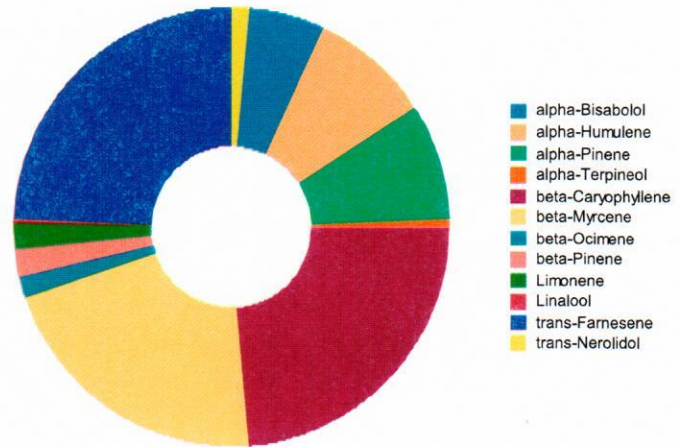
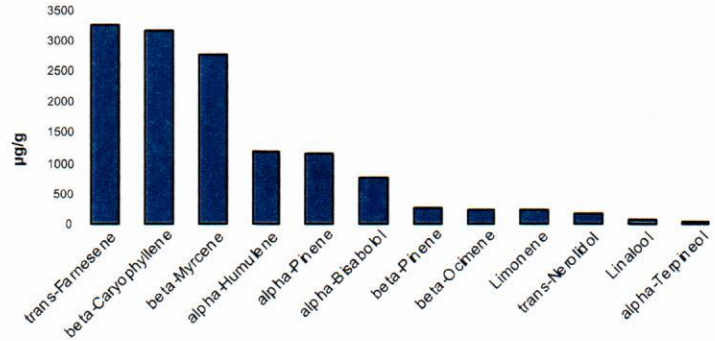
AG-R10408871HG

Laboratory ID: 1909077-02

**Terpene Test Report**

Analysis Method/SOP: Terp

Analyte	Result µg/g	Result %
alpha-Bisabolol	754.1	0.07541
Camphene	< LOQ	< LOQ
Camphor	< LOQ	< LOQ
delta-3-Carene	< LOQ	< LOQ
beta-Caryophyllene	3174	0.3174
Caryophyllene Oxide	< LOQ	< LOQ
p-Cymene	< LOQ	< LOQ
Eucalyptol	< LOQ	< LOQ
Geraniol	< LOQ	< LOQ
Geranyl acetate	< LOQ	< LOQ
Guaiol	< LOQ	< LOQ
alpha-Humulene	1178	0.1178
Isoborneol	< LOQ	< LOQ
Isopulegol	< LOQ	< LOQ
Limonene	224.3	0.02243
Linalool	58	0.005800
beta-Myrcene	2782	0.2782
trans-Nerolidol	168.6	0.01686
Ocimene	< LOQ	< LOQ
alpha-Pinene	1152	0.1152
beta-Pinene	278.1	0.02781
Pulegone	< LOQ	< LOQ
Sabinene	< LOQ	< LOQ
gamma-Terpinene	< LOQ	< LOQ
alpha-Terpinene	< LOQ	< LOQ
Terpinolene	< LOQ	< LOQ
Valencene	< LOQ	< LOQ
Nerol	< LOQ	< LOQ
L-(-)-Fenchone	< LOQ	< LOQ
cis-Nerolidol	< LOQ	< LOQ
(+/-)-Borneol	< LOQ	< LOQ
(+/-)-Fenchone	< LOQ	< LOQ
alpha-Phellandrene	< LOQ	< LOQ



*Erik Werstler*

Erik Werstler  
Lab Director

## Lifer Hemp Flower

*Whole Circle Farms*

AG-R10408871HG

Laboratory ID: 1909077-02

Analysis Method/SOP: Terp

Analyte	Result µg/g	Result %
beta-Ocimene	230.4	0.02304
cis-Farnesene	< LOQ	< LOQ
Menthol	< LOQ	< LOQ
trans-beta-Ocimene	< LOQ	< LOQ
trans-Farnesene	3268	0.3268
alpha-Terpineol	44.87	0.004487
gamma-Terpineol	< LOQ	< LOQ
<b>Total Terpenes</b>	<b>13310</b>	<b>1.331</b>



**Erik Werstler**

Lab Director